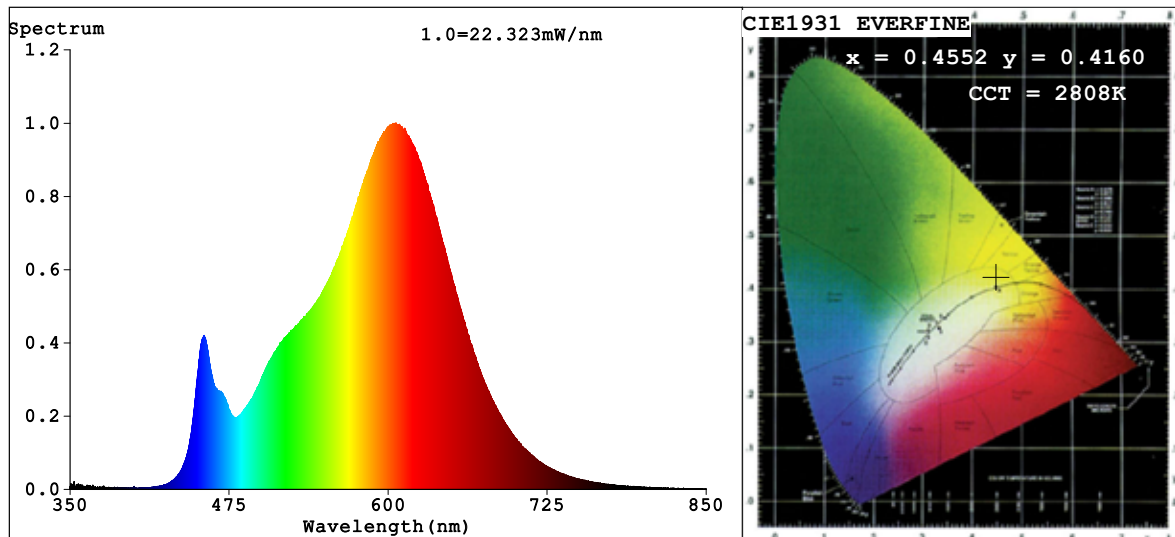


Spectrum Test Report



Color Parameters:

Chromaticity Coordinate: $x=0.4552$ $y=0.4160$ $u'=0.2571$ $v'=0.5287$
 CCT=2808K (Duv=0.0024) Dominant WL: $\lambda_d = 582.9\text{nm}$ Purity=61.5%
 Ratio: R=24.2% G=73.2% B=2.5%; Peak WL: $\lambda_p = 606.2\text{nm}$ FWHM=115.2nm
 Render Index: Ra=82.5 CRI=77.4 TM30: Rf=82 Rg=92
 R1 =81 R2 =93 R3 =94 R4 =80 R5 =82 R6 =93 R7 =81
 R8 =57 R9 =5 R10=84 R11=80 R12=73 R13=84 R14=97 R15=72

Photo Parameters:

Flux = 1035 lm Eff. : 101.54 lm/W Φ_e = 3.121 W

Electrical parameters:

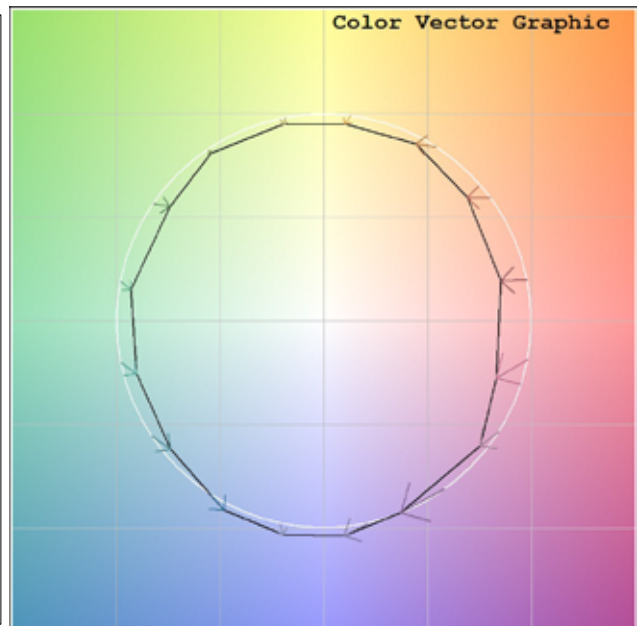
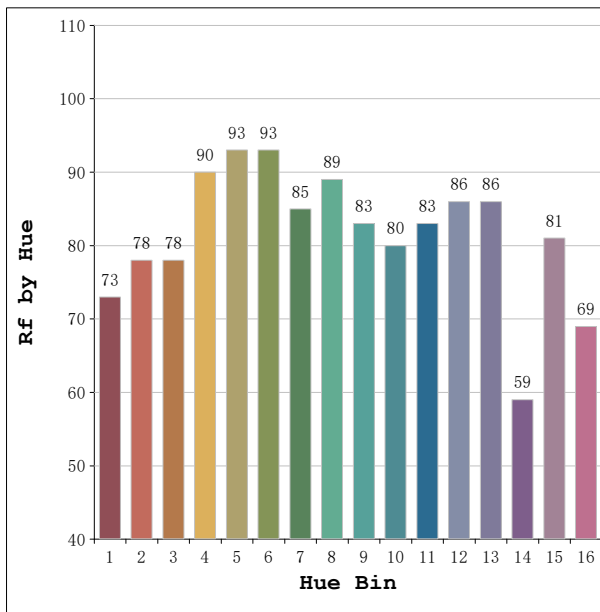
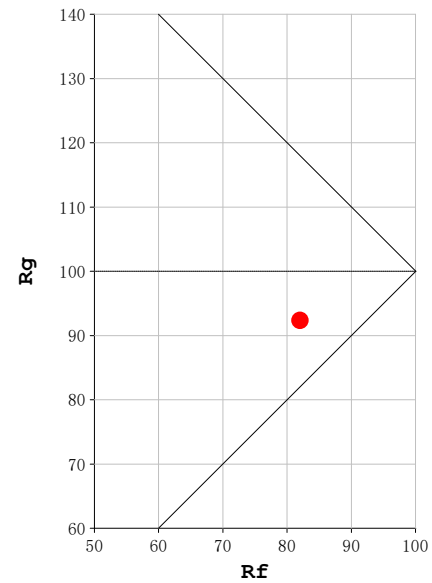
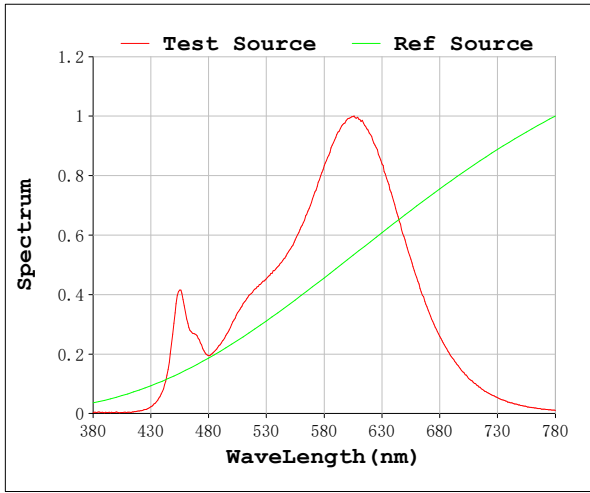
V = 23.998 V I = 0.4247 A P = 10.19 W PF = 1.000

Status: Integral T = 1250 ms I_p = 53703 (82%)

Model: Ecoled Vizaya 2800
 Tester: Sergio Carneros
 Temperature: 27Deg
 Manufacturer: Luz Negra S.L.

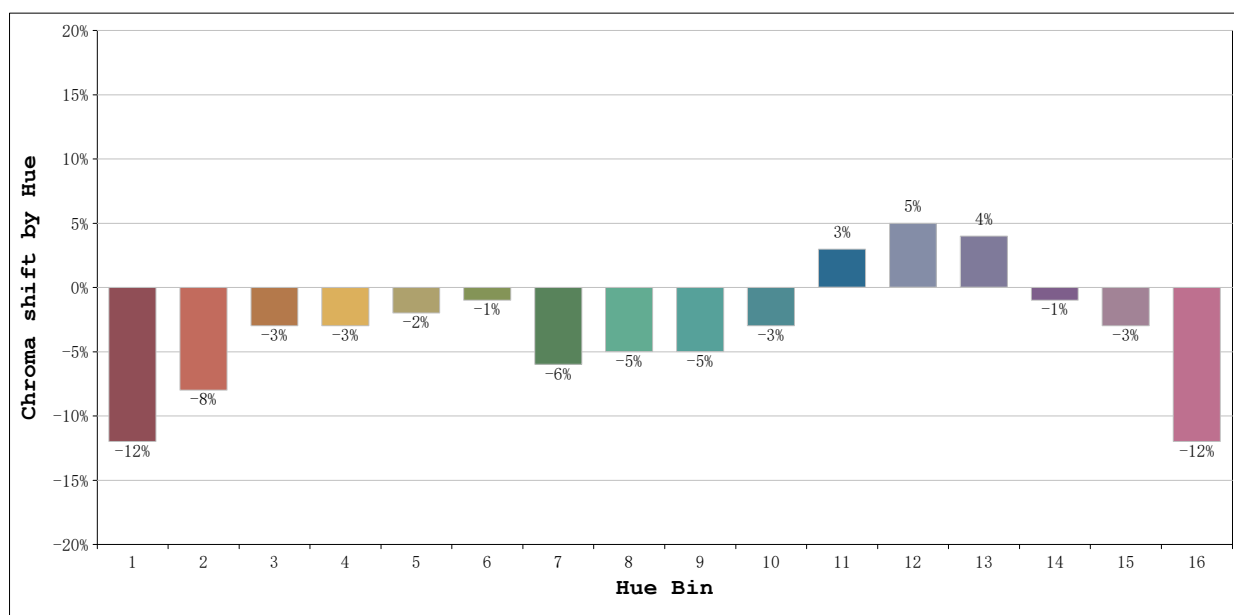
Number: 32.228
 Date: 2026-06-02 08:17:37
 Humidity: 35%
 Remarks: 100cm de tira flexible

Rf: 82 CCT: 2808 K u': 0.2571
Rg: 92 Duv: 0.0024 v': 0.5287



Model:Ecoled Vizaya 2800
Tester:Sergio Carneros
Temperature:27Deg
Manufacturer:Luz Negra S.L.

Number: 32.228
Date:2026-06-02 08:17:37
Humidity:35%
Remarks:100cm de tira flexible



			Graphic shift(%)	
Hue Bin	Hue Angle	Rf	Chroma	Hue
1	0.0° - 22.5°	73	-12	2
2	22.5° - 45.0°	78	-8	6
3	45.0° - 67.5°	78	-3	9
4	67.5° - 90.0°	90	-3	2
5	90.0° - 112.5°	93	-2	2
6	112.5° - 135.0°	93	-1	0
7	135.0° - 157.5°	85	-6	-2
8	157.5° - 180.0°	89	-5	3
9	180.0° - 202.5°	83	-5	7
10	202.5° - 225.0°	80	-3	10
11	225.0° - 247.5°	83	3	10
12	247.5° - 270.0°	86	5	3
13	270.0° - 292.5°	86	4	-12
14	292.5° - 315.0°	59	-1	-23
15	315.0° - 337.5°	81	-3	-10
16	337.5° - 360.0°	69	-12	-11

Model:Ecoled Vizaya 2800
Tester:Sergio Carneros
Temperature:27Deg
Manufacturer:Luz Negra S.L.

Number: 32.228
Date:2026-06-02 08:17:37
Humidity:35%
Remarks:100cm de tira flexible